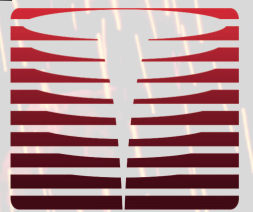
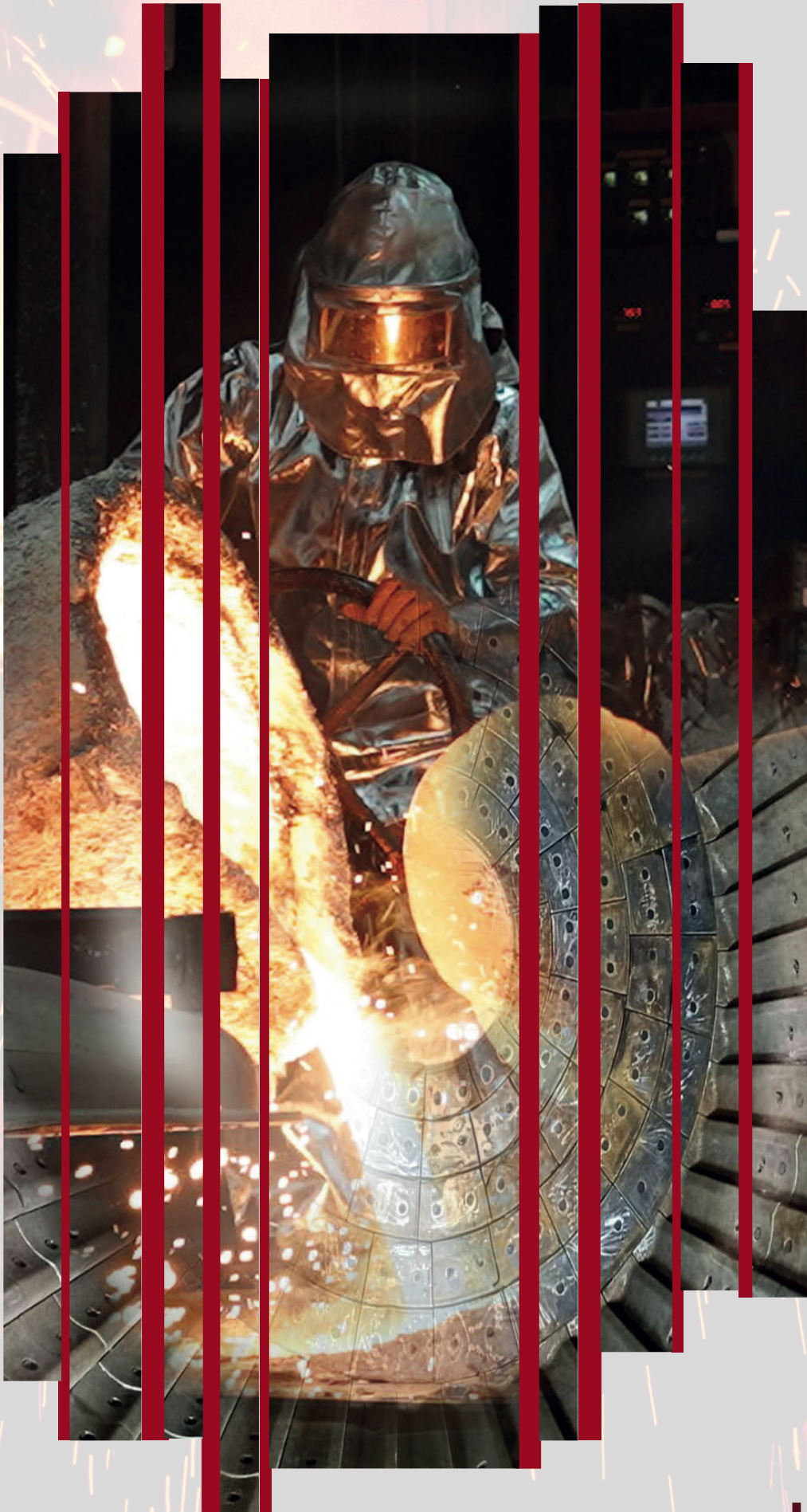


KORFEZ FOUNDRY



KÖRFEZ

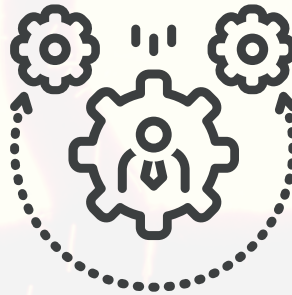
www.korfezdokum.com

KORFEZ'S APPROACH



Innovative

KORFEZ's leading technology and technical know-how are powerful tools in developing innovative products for long-term usage, thus offering the best possible solutions for the mining, cement, and energy industries.



Dynamic

Driven by KORFEZ's lean manufacturing process and internalized 5S philosophy, productivity is continuously enhanced, along with increased flexibility and dynamism each day.

Customer-Oriented

KORFEZ listens to you, understands you, and offers the best solution for you.

Customer-oriented principles are at the core of KORFEZ's metal production, and the primary goal is to deliver the highest possible value.



»»» MORE THAN JUST A FOUNDRY «««

ABOUT KORFEZ FOUNDRY



KORFEZ operates in the field of alloyed steel castings and the production of metal components subject to wear.

KORFEZ provides high-quality products and the best custom-based solutions for various industries. KORFEZ's technical expertise is based on many years of experience.

KORFEZ exports 90% of its products to over 80 countries across six continents. With an archive of more than 44,000 patterns, KORFEZ can produce products with unit weights ranging from 0.5 to 8,000 kgs and has a monthly production capacity of 800 tons.

KORFEZ is currently operating at the Dilovası Factory, which spans a total area of 50,000 m², including a covered area of 20,000 m².

»»» **A Leading Supplier
Serving the Cement,
Mining, and Energy
Industries**



KORFEZ creates effective business solutions for the cement, mining, and energy industries.

KORFEZ's main operation area is alloyed steel castings, with a focus on heat-resistant, wear-resistant, and impact-resistant steel castings.

VALUES AND CORPORATE CULTURE

Mission

KORFEZ's mission is to deliver exceptional steel casting solutions that meet the highest standards of quality and efficiency. KORFEZ is committed to innovation, customer satisfaction, and environmental responsibility, continuously improving processes and products to exceed the expectations of global customers. Through dedication to operational excellence and sustainable practices, KORFEZ aims to foster long-term partnerships and contributes positively to the industries served.



Vision



KORFEZ's vision is to become one of the world's premier steel casting suppliers, achieving global recognition and customer respect through an unwavering commitment to excellence.

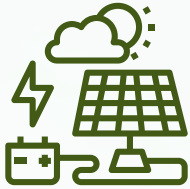
Values

- ✓ **Excellence:** Commitment to the highest quality and efficiency in all actions
- ✓ **Innovation:** Embracing technology to stay at the forefront of the industry
- ✓ **Sustainability:** Prioritizing environmental responsibility and resource efficiency
- ✓ **Integrity:** Conducting business with honesty and transparency
- ✓ **Customer Focus:** Delivering tailored solutions to meet customer needs
- ✓ **Teamwork:** Fostering collaboration and a supportive work environment
- ✓ **Safety:** Ensuring a safe and healthy workplace for all employees



SUSTAINABLE FUTURE AND GLOBAL NETWORK

Sustainability



KORFEZ is committed to high-quality, efficient production and customer satisfaction while minimizing environmental impact and embedding these values throughout the organization. By staying ahead of technical advancements in an eco-friendly environment, KORFEZ aims for sustainable growth.

KORFEZ focuses on sustainability in cost, shipment, and quality, ensuring customer satisfaction through tailored solutions. Its lean production approach fosters employee engagement and creates impactful customer solutions while prioritizing resource efficiency and environmental stewardship.

Occupational health and safety are priorities at KORFEZ. A robust safety system is implemented to prevent accidents and ensures a safe working environment.

KORFEZ is environmentally conscious, taking steps to protect the ecosystem, conserve resources, and minimize waste.

The goal of KORFEZ is to leave a livable world for future generations.

Global Network



An extensive representative network:

- Belgium
- Egypt
- East Europe
- France
- Greece
- Indonesia
- Italy
- Kazakhstan
- Malaysia
- Mid-Africa
- Middle East
- South Africa
- South America
- Spain
- Turkmenistan
- Ukraine

»»» YOUR FOUNDRY PARTNER «««

KORFEZ'S COMPANIES



KORFEZ Centrifuge was established in 2004 to produce steel pipes using a centrifugal casting method.

KORFEZ Centrifuge produces all kinds of stainless and ductile steel, primarily focusing on stainless pipes.



««« KORFEZ CENTRIFUGE

»»» KORFEZ ENG

KORFEZ Engineering, located in Neubeckum, provides solution-oriented consultancy services and high-alloy wear-resistant and heat-resistant steel castings.

KORFEZ Engineering has shifted its focus to the engineering and production of system components, particularly on mill shell linings and mill diaphragms for ball mills utilized in the cement, mining, and energy industries.



KORFEZ'S HISTORY

➤➤➤ A Family Business That Has Grown with Experience Over Many Years



In 1988, KORFEZ was established in Turkey. KORFEZ's primary goal is to maintain a high level of awareness regarding industry developments, integrate them into its operations, and subsequently protect and expand its market position by continuously improving its capabilities and expertise.

In 1996, KORFEZ relocated from its Dilovası factory to a new location within the same region, serving as one of the first examples of this continuous improvement approach.

In 2004, the company furthered this philosophy by establishing the KORFEZ Centrifuge, followed by the inauguration of the Machinery Shop in 2010. These expansions significantly improved the company's technical expertise and production capacity.

In 2011, KORFEZ Engineering was established in Neubeckum, further extending the company's reach and reinforcing its commitment to delivering innovative and reliable engineering solutions on a global scale.

QUALITY POLICY

For Us, 'Quality' Is Not Just a Slogan but a Practical Issue



KORFEZ Offers the Best Product with Best Quality Control Process

Quality Control processes performed by certified staff according to EN norms are as follows:

- Chemical Analysis (Every melt charge is double-checked with the spectrometer to secure the required chemical composition)
- Dimensional Control
- Mechanical Tests (Hardness, Tensile, Bending, Impact Test)
- Microstructure
- NDT (Ultrasonic, Magnetic Particle, Radiographic, Liquid Penetrant Test)



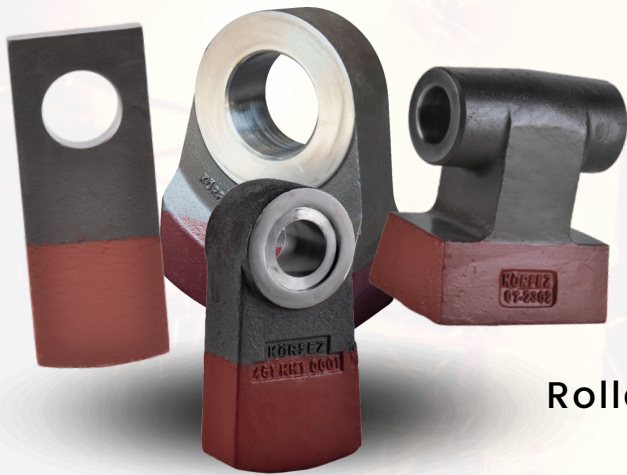
PRODUCT SOLUTIONS

Crushing Wear Parts

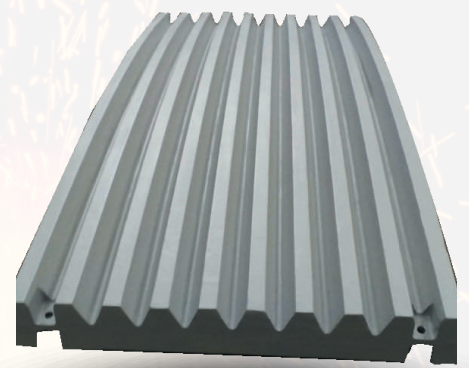
KORFEZ produces high-quality crusher wear parts for various industrial applications. KORFEZ parts are renowned for their durability, crushing efficiency, and reliability, whether employed in the cement, mining, or energy industries. KORFEZ parts consistently provide a strong return on investment, as evidenced by their reduced breakage risks compared to other alternatives. Many of KORFEZ's valued customers can attest to this.

KORFEZ is the market leader in designing and manufacturing these critical components for the cement, mining, and energy industries, making them ideal for anyone who needs superior crusher wear parts.

Crusher Hammers



Crusher Jaw



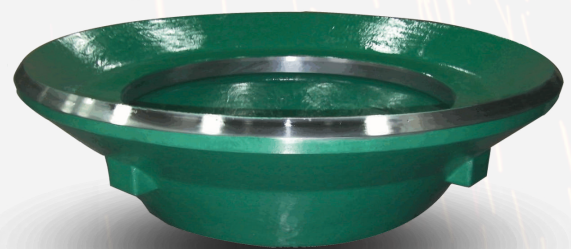
Roller Crusher Parts



Impact Crusher Parts



Crusher Cone



PRODUCT SOLUTIONS

Grinding Wear Parts

KORFEZ is renowned for its ability to manufacture wear parts that are both durable and of exceptional quality, specifically engineered to fit customer's grinding circuit. KORFEZ's engineering team is committed to providing optimal customized solutions to meet customer's grinding circuit's specific needs. KORFEZ guarantees that its designs offer the highest industry standards by thoroughly analyzing customer's operational requirements.

KORFEZ's meticulously engineered wear parts optimize customer's grinding process, allowing customer to produce superior product quality and achieve optimal performance. Whether employed in the mining, cement, or energy industries, KORFEZ's solutions are designed to optimize customer's productivity while reducing maintenance costs and outages.

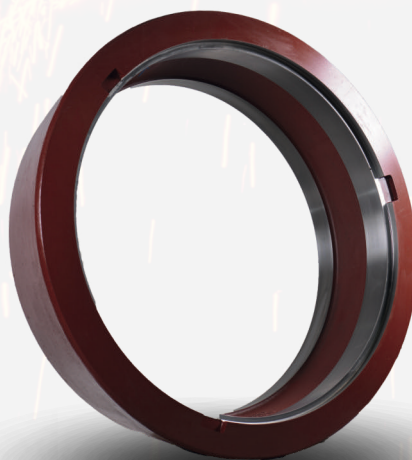
Tube Mill Liners



Hammer Mill Parts



Vertical Mill Parts



PRODUCT SOLUTIONS

Pyro Process Spare Parts

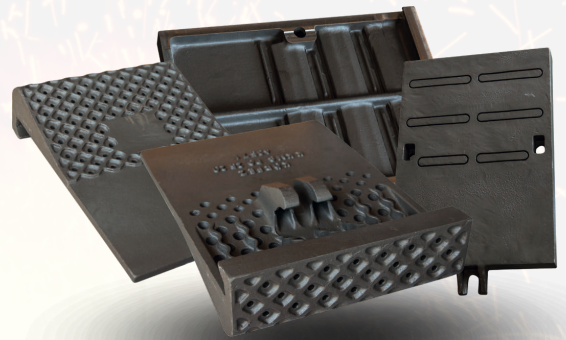
KORFEZ comprehends that a plant's overall performance and efficiency are significantly influenced by the casting components employed in pyro processes. These components are frequently subjected to rapid thermal cycling, intensive pressure, and high temperatures, among the most extreme conditions in an industrial environment. The quality and reliability of these components are essential to the efficiency of burning and cooling processes.

KORFEZ engineers are committed to provide solutions that facilitate the seamless integration of existing systems, thereby improving customer facility's overall efficiency and ensuring uninterrupted operation. By emphasizing precision and durability, KORFEZ assists you in achieving consistent performance and reducing the likelihood of unforeseen delays.

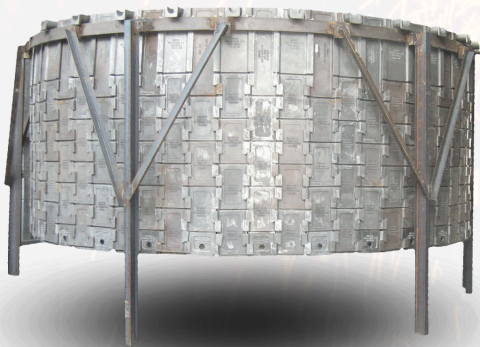
Kiln Segments



Cooler Plates



Pre-Heater Parts

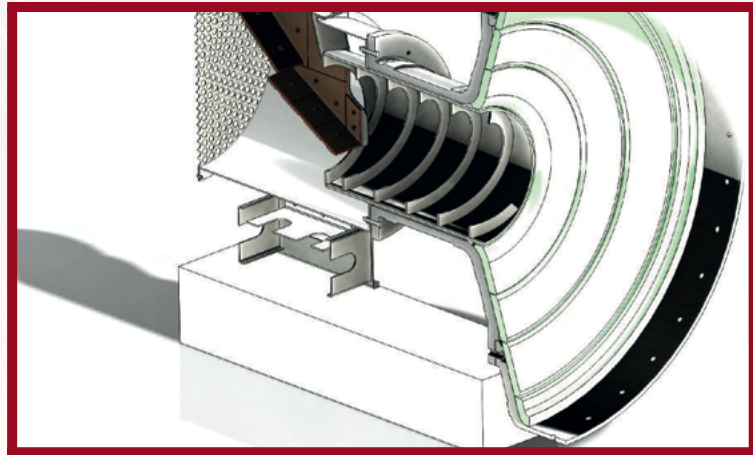
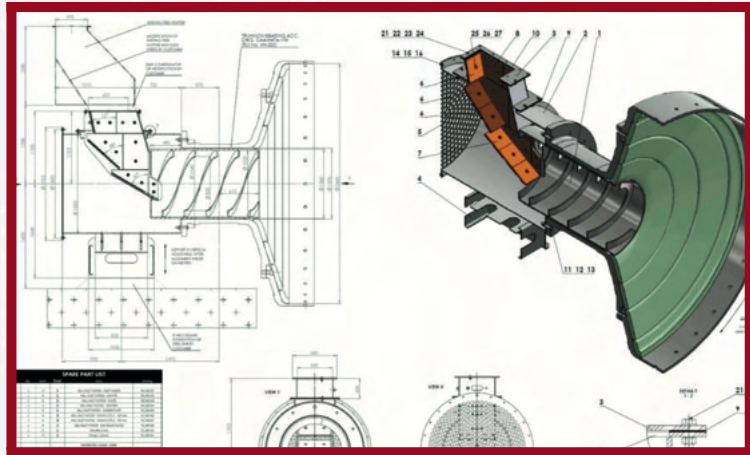


Boiler Spares



SERVICE SOLUTIONS

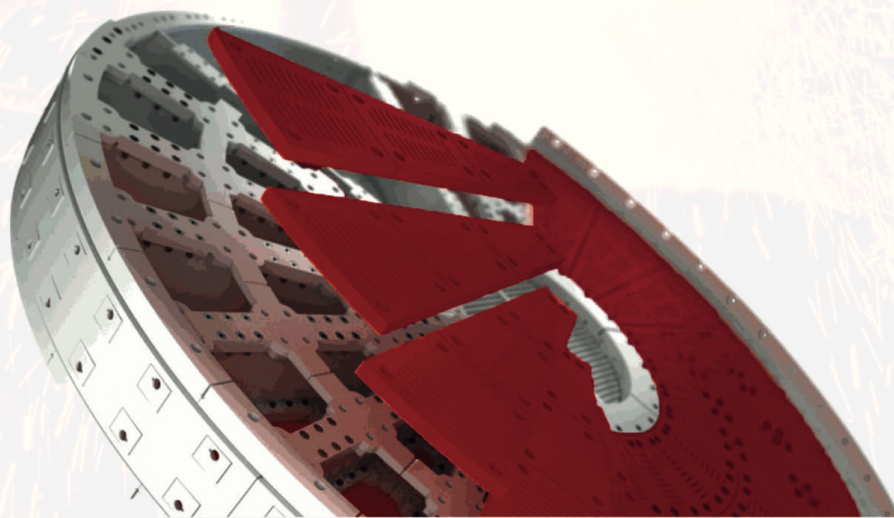
Engineering and Supervising



KORFEZ assists you on-site, determines the degree of wear, and highlights optimization potential. With a deep understanding of customer needs, KORFEZ provides detailed and precise layout drawings and spare part lists tailored to customer specific requirements, ensuring accuracy and reliability at every step.

Installation instructions for KORFEZ's tube mill, diaphragm, kiln segment, and dip tube projects are developed as guidelines for effortless assembly.

Process Control and Optimization

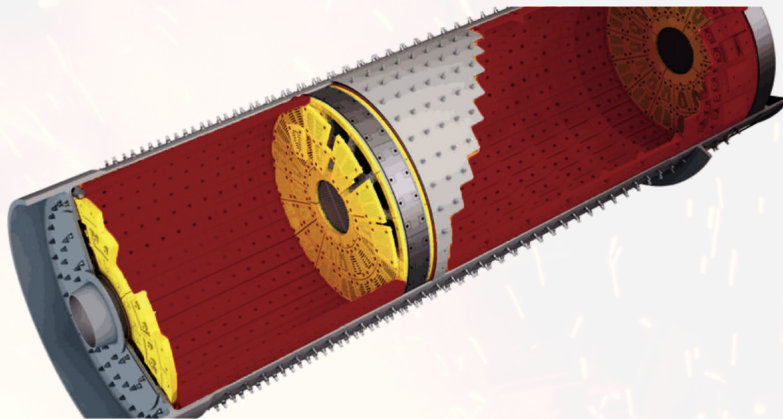


KORFEZ uses the experience of its highly qualified staff to extensively evaluate every process in the customer's system. KORFEZ's systematic methodology guarantees a comprehensive analysis of all aspects of the customer's business, enabling the pinpointing of crucial areas needing enhancement and streamlining.

KORFEZ's consulting services examine results to find the best solution, which is created based on a technical evaluation and provide optimization in customers' production processes along with other possible suggestions for improving business processes.

SERVICE SOLUTIONS

Equipment Upgrades



As technology advances at an unprecedented pace and becomes increasingly vital in the business world, staying current is no longer just an option but a necessity. Embracing technological change is inevitable, and updating systems can bring numerous benefits, from enhancing operational efficiency to maintaining a competitive edge.

KORFEZ's highly qualified engineers are dedicated to helping you navigate these technological shifts. KORFEZ offers custom-based solutions specifically designed to meet the customer's business's unique needs. By integrating the latest emerging technologies, KORFEZ aims to significantly boost productivity, streamline processes, and drives sustainable growth.

Spare Parts Supply



As KORFEZ, pride is taken in the extensive archive, which houses over 44,000 unique patterns. This vast collection enables KORFEZ to meet a wide range of production needs with precision and efficiency. The manufacturing capabilities are equally impressive, allowing KORFEZ to produce products with unit weights ranging from as small as 0.5 kg to as large as 8,000 kg.

Whether customer requires lightweight components or large-scale industrial parts, KORFEZ has the expertise and resources to deliver high-quality products tailored to specific requirements.

ADVANCE CASTING SOLUTIONS

Bimetallic Part Casting

Bimetallic hammers consist of two different kinds of materials: a tough material in the fixation zone and a hard and wear-resistant material in the working area. The part is produced using a unique method, so the two materials are bonded together like one single piece. A bimetallic hammer is resistant to breakage in the shaft area and wear in the working area.

The use of bimetallic parts can increase wear resistance and service life and decrease downtime and maintenance costs significantly. This is especially useful in applications where different mechanical properties in different areas of the part are required.



Ceramic Composite Casting



Composite parts are strengthened with rigid ceramic inserts in the wear zone, while the rest of the material remains tough due to the naturally ductile base material.

Consequently, the flexibility of the base material is combined with the wear resistance of the ceramic inserts. KORFEZ's composite parts improve the service life of conventional monometallic parts by several multiples.

CENTRIFUGAL CASTING SOLUTIONS

KORFEZ Centrifuge specializes in centrifugal casting, producing high-quality pipes that satisfy the rigorous standards of these demanding environments.

KORFEZ's state-of-the-art technology facilitates the seamless production of customized pipes to meet the customer's unique needs, including precise dimensions and custom chemical compositions. Following the casting process; cutting, welding, machining, and assembly departments convert these tubes into specialized products such as furnace rollers, heat exchangers, custom flanges, and various other industrial components.

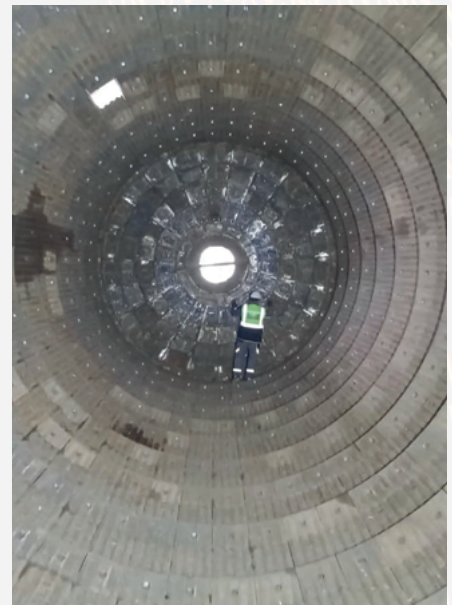
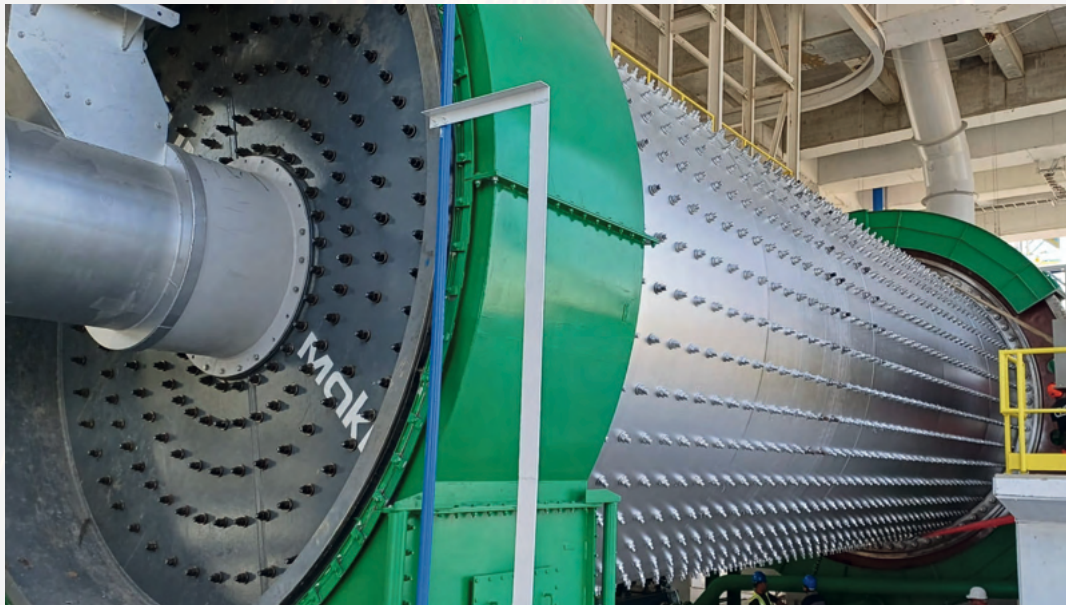
KORFEZ Centrifuge is dedicated to providing exceptional products that are durable and precisely engineered to satisfy industry's specific requirements.



OPERATIONAL UNITS



RECENT PROJECTS



#More Than Just a Foundry



00 90 262 754 51 77



info@korfezdokum.com



www.korfezdokum.com

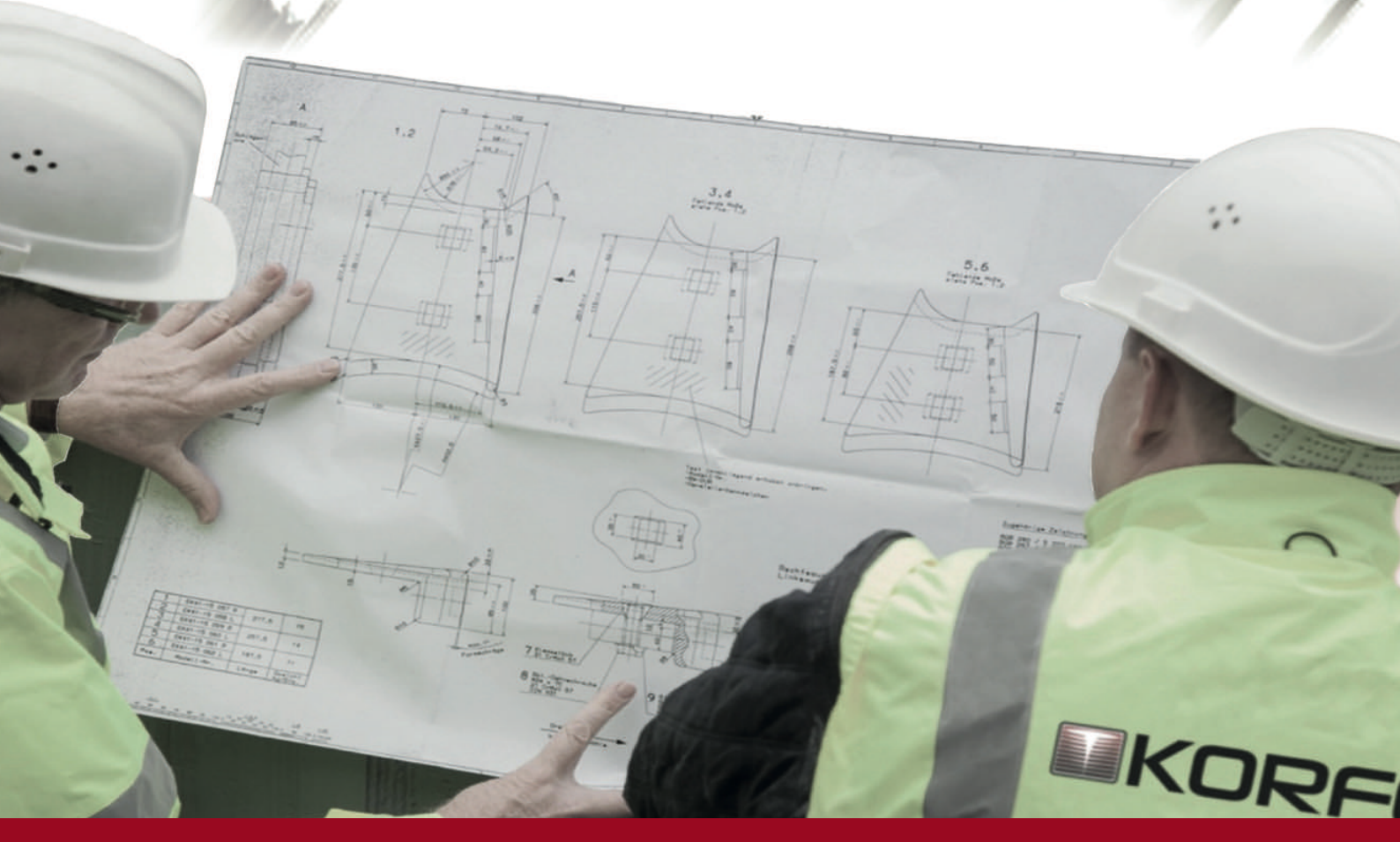


DOSB 2. Kısım D-2033 Sk. No:2 41455 Dilovası/ Kocaeli/
Türkiye



korfezdokum

KORFEZ's Solutions Reach 6 Continents, 80 Countries



Item	Quantity	Unit
1.0	100	m ²
2.0	50	m ²
3.0	20	m ²
4.0	10	m ²
5.0	5	m ²
6.0	2	m ²
7.0	1	m ²
8.0	1	m ²
9.0	1	m ²

 **KORFEZ**